



Sri Radha Krishna Goenka College

Main Road, Sitamarhi, Bihar-843302

A constituent unit of B.R.A. Bihar University, Muzaffarpur Bihar

Undergraduate & Postgraduate Teaching Center , Est. 01.04.1949

Web: goenkacollege.org

E-mail ID - srkg_principal@rediffmail.com



Metric ID. 7.1.2

The Institution has facilities and initiatives for

1. **Alternate sources of energy and energy conservation measures**
2. **Management of the various types of degradable and nondegradable waste**
3. **Water conservation**
4. **Green campus initiatives**
5. **Disabled-friendly, barrier free environment**

HEI Input :

A. 4 or All of the above

Geotagged Photograph Attached below



Fig 1. DISABLED FRIENDLY Barrier Free COLLEGE ENTRY GATE



Fig 2 Disabled Friendly Barrier Free Ramp in Arts and Commerce Block



Fig. 3 A Disabled-friendly Barrier Free Science Faculty Main Entry Gate



Fig 3 B Disabled Friendly Barrier Free Ramp in Examination Building



Fig 3C Disabled Friendly Barrier free Boys Toilet



Fig 3D Disabled Friendly Barrier Free Toilet for Girls



Fig 3 E Disabled Friendly Barrier Free Entry in Administrative Building



Fig 4 Alternate/emergent Energy Source Department of Botany



Fig 5. Alternate/emergent Energy source in Department of Zoology

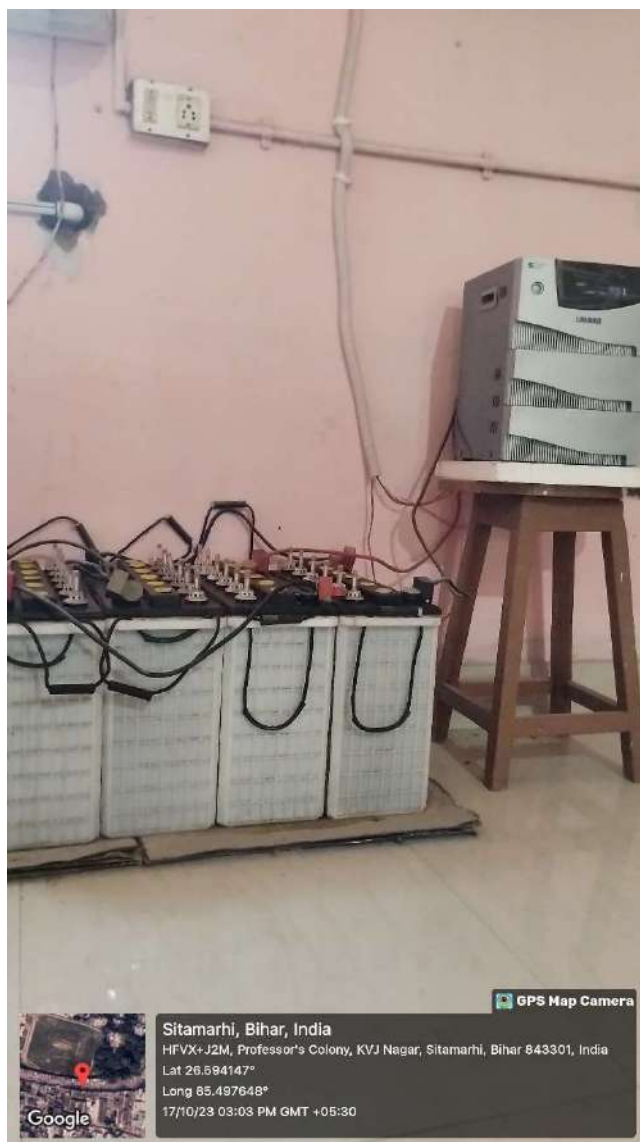


Fig 6. Alternate/Emergent Energy source in Department of Physics



Fig 7 Alternate/Emergent Energy source in Examination Section



Fig 8 Alternate Electricity Generator in Arts & Commerce Block



Fig 9 Alternate Electricity Generator for Science block, Library, Accounts and Principal Office

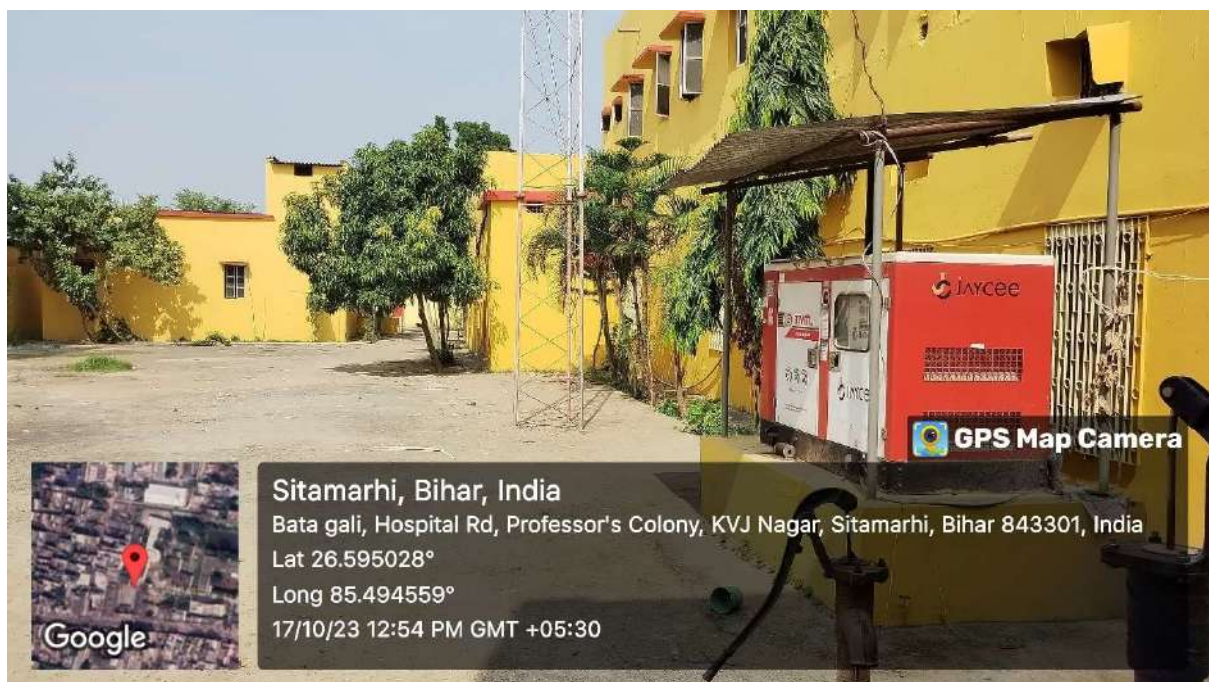


Fig 10 Alternate Energy Generator for BBA, BCA, Seminar Hall and Exam Section



Fig 11 Only LED light is used in campus to save maximum electricity

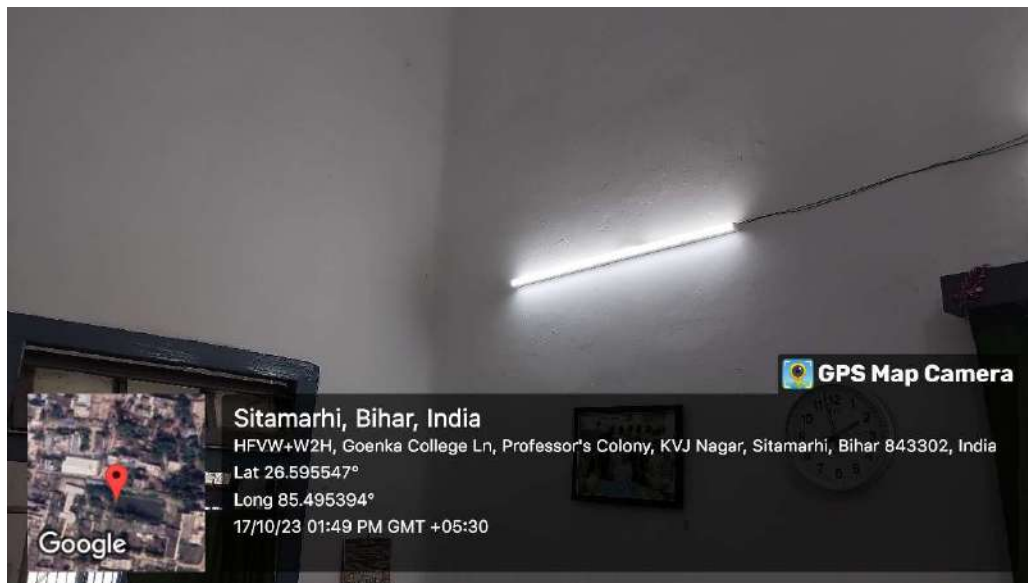


Fig 12 Only LED light is used in campus to save maximum electricity



Fig 13 Rain Water Harvesting and channelling to water catchment area /pond



Fig 14: Rain water storage cum laboratory pond

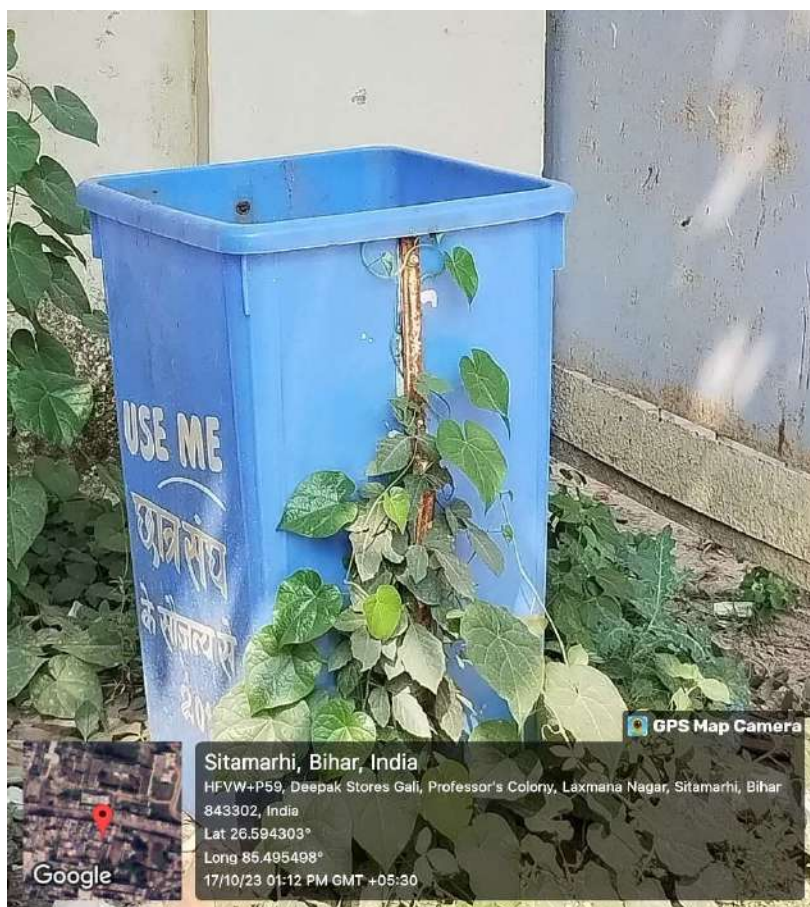


Fig 15 Dustbin installed at various key locations to collect dry wastes



Fig 16A Dustbin installed at various key locations to collect dry wastes



Fig 16B Dustbin installed at various key locations to collect dry wastes

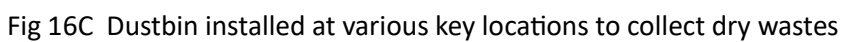


Fig 16C Dustbin installed at various key locations to collect dry wastes



Fig 17 As a green campus initiative lush green garden in Science faculty

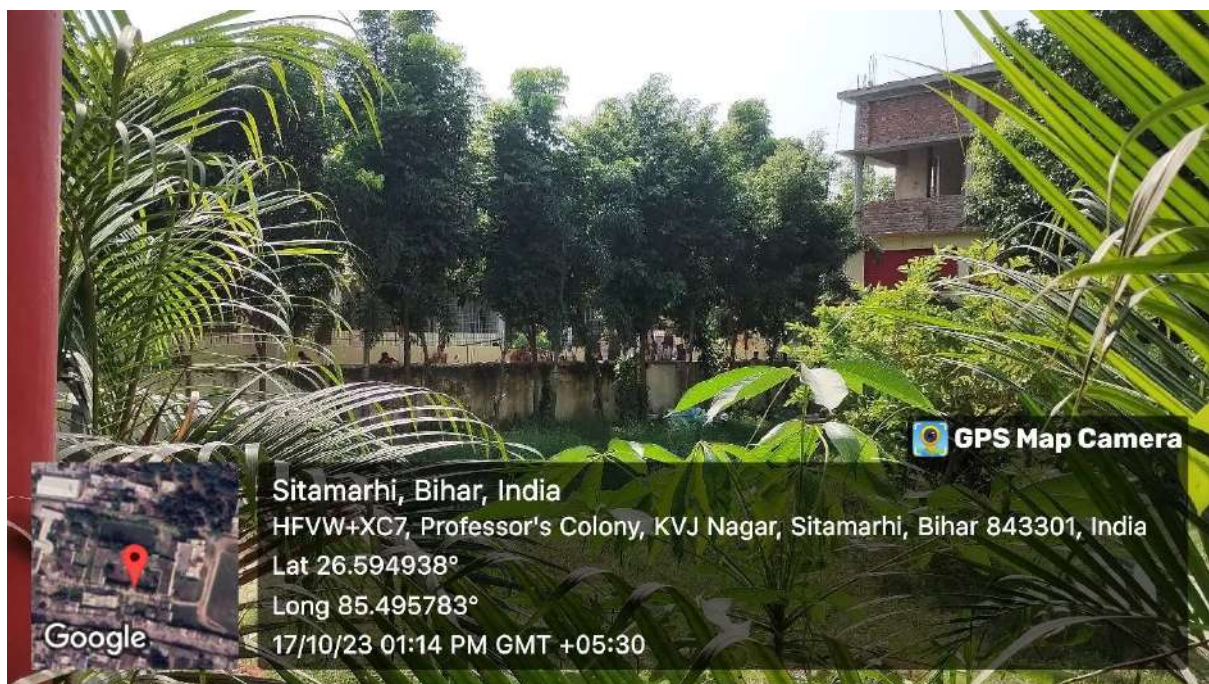


Fig 18 As a green campus initiative lush green garden in Science faculty



Fig 19 As a green campus initiative lush green garden in Science faculty



Fig 19 As a green campus initiative in college campus on 15 Aug 2019



Fig 20 Clean & green campus initiative in college campus on 15 Aug 2019



Fig 21 clean and green college campus



Fig 22 Open gymnasium with greenary